

A photograph of a modern restaurant interior. The ceiling features a decorative, repeating geometric pattern. The main wall is a light, neutral color. In the foreground, a dark bar counter is illuminated from below. On the bar, there are several wine glasses and a long, illuminated display case containing fresh produce. Behind the bar, four dark wooden bar stools with light-colored seats are lined up. The floor is a light, neutral color. The overall atmosphere is clean, modern, and sophisticated.

Yummy!

RESTAURANT AND BAR DESIGN

ARTPOWER

RESTAURANT

Taiyo Sushi Restaurant, Milan	002
Enso Sushi & Grill	008
P.F. Chang's China Bistro, Antea, Mexico	014
Taizu	020
Studio Hermes	026
Laem Charoen Seafood	032
Mr. and Mrs. Lee Restaurant	038
Elmercao	044
Door19 Part 1	052
Café ArtScience	058
Saboten Beijing the 1st	064
Heijouen Matsubara	070
LAVAROCK	076
TYO-Japanese Restaurant	082
Umo Restaurant	086
Atlantis Blue	092

Part1

Kuo Restaurant	096
Nomo Restaurant	102
The Cave, VIP Lounge ARCOmadrid 2013	108
Fish & Fusion Restaurant	114
Food & Forest Park Restauran	120
Jardín de Asia Restaurant	126
Kanoya-Kumamoto	132
A Simple Brick Interior (Commune Cafe and Bistro)	138
La Nonna Cucina Bar	144
Obed Bufet	150
One Sushi	156
Baa/Ga/Din, Modern Thai Street Food	162

BAR

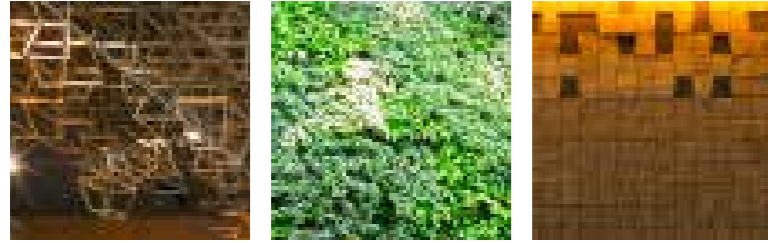
Don Chido	170
Fairwood Café	176
Twister	182
Craft & Commerce	186
Tanoon Mai Thai Restaurant	190
Hard Rock Hotel Palm Springs	194
Ramen Bar Suzuki, Ho Chi Minh City	200
Sushi Groove Market Restaurant	206
Gamsei—a Cocktail Bar Rethought	212
Shustov Brandy Museum & Bar	216
Cheese Bar Barcelona	222
DOB3 Beer and Whisky Bar	230
Ironside Fish & Oyster Bar	234
PARQ	240
Funny Cabany Bar & Grill	246
La Peñita de Jaltemba	254

Part2

Door19 Part 2	260
Dessance, Gourmet Dessert Bar	266
PABLO Himeji	272
Wildfire Pizzabar + Grill	276
6 Degrees Cafe	280
The Coffee Shop	284
Pintxos	288
Primo Cafe Bar	292

CONTRIBUTORS	296
---------------------	-----

CONTENTS



Fish & Fusion Restaurant

Design Agency / YOD Design Lab

Designers / Vladimir Nepiyvoda, Dmitry Bonesko

Location / Poltava, Ukraine

Area / 190 m²

Photography / Andrey Avdeenko



· MENU NOTE ·

A series of horizontal lines for writing a menu note.

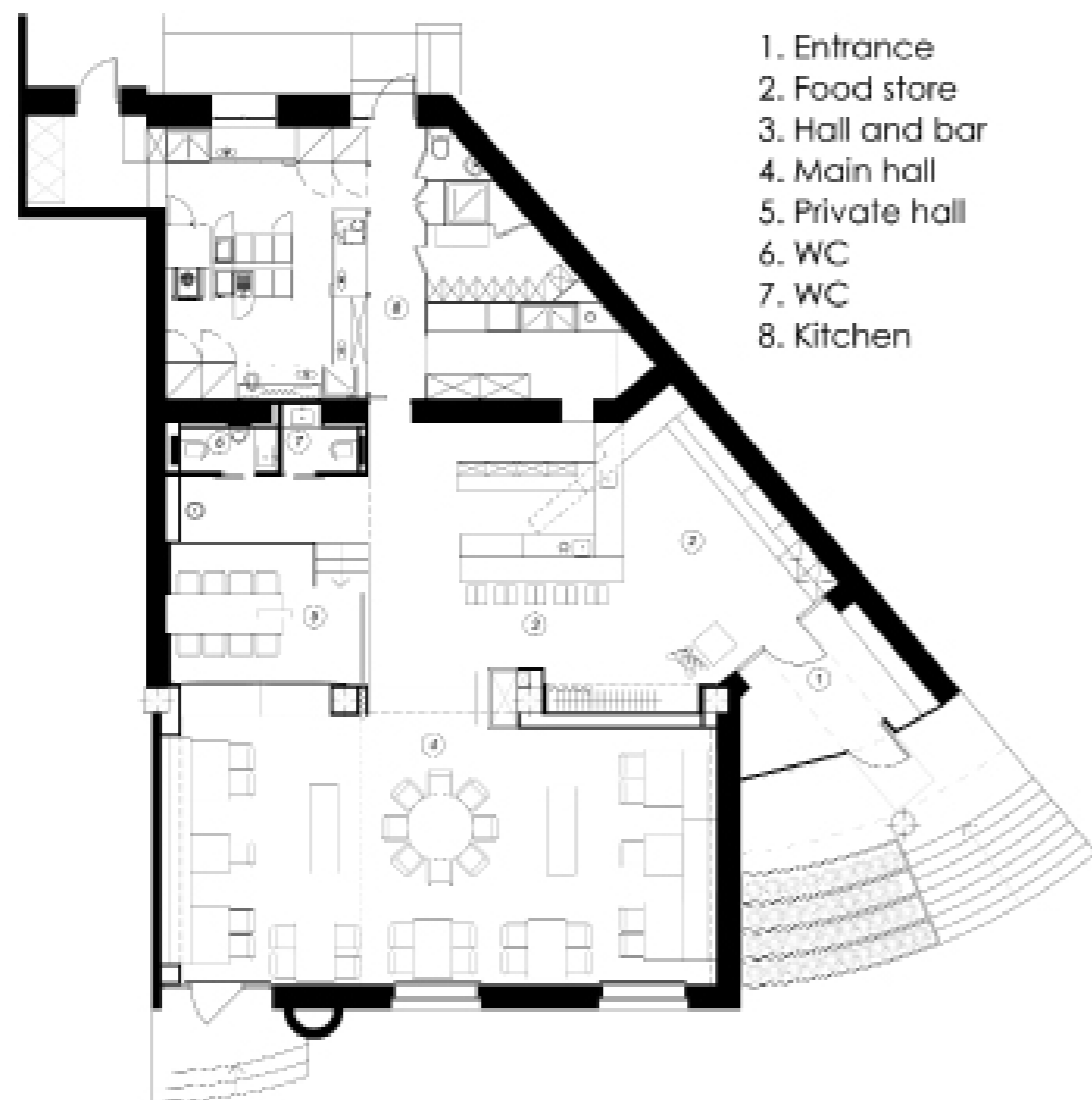




The idea of fish restaurant establishment in Poltava was demanded by restaurant market realities in this city. High class fish restaurants are practically absent in the region. Fish & Fusion became one of the leaders in the sector. In this respect we had a difficult task to create completely new, innovative image of a fish restaurant.

We decided not to use banal perception of a nautical theme through sailor's vests, anchors, blue and white colors, various marine utensils etc.

We tried to reproduce the marine theme through decoration materials, such as rusty metal, stone, old wood, greenery, colors and various decor elements.



1. Entrance
2. Food store
3. Hall and bar
4. Main hall
5. Private hall
6. WC
7. WC
8. Kitchen

Fish & Fusion Plan



The metal in the aqueous environment is resistant to corrosion (rusting) and this way becomes brighter and more interesting, like it is alive. This material was actively used by us in the decoration of walls and in the decorative items making.

The wood also changes its color and texture under the constant influence of atmospheric precipitation. One of the main hall walls is decorated by such old tree, which we collected in all the nearby villages. This tree was affected by all kinds of atmospheric precipitations for more than half a century. And that texture which the wood receives due to this influence indicates that this material is alive and real. And this is exactly what we wanted to obtain in all our projects: creation

of authentic objects preserving harmonious communication links between a man and the environment.

The wall decorated by greenery creates an image of a vertical underwater rock covered by algae and it brings excitement to the surrounding space.

The stone, which was used in the decoration of the private hall, was for that purpose specially selected from the remnants of huge blocks, we selected segments with maximum torn effect to reflect the image of a rocky shore.





From decorative elements we would like to highlight a non-trivial image of fish scale, which we realized as a decorative element from rusty metal on the main hall ceiling, in a felt tile in strange niches, and which was taken as a basis for specialty style of the restaurant.

A felt which was used in niches and chairs decoration, bright pillows, bio-fireplace bring notes of mildness and playfulness in this minimalistic interior.

Zoning: restaurant area is 190 m². The premise is composed of several independent zones: shop-cooking is smoothly flows into the bar, guest room, which can easily be separated into various guest areas depending on visitors wishes by light movable furniture. Such decorative technique as tissue screen, which visually completely separates one area of the main hall also contributes to this. A private room on a raised platform is located between the bar and guest room, and it may be transformed into a scene, if necessary. The entire area of a private room along with a waiting room and bathrooms is allocated into one common unit by rusty metal decoration.





Food & Forest Park Restaurant

Design Agency / YOD Design Lab

Location / Poltava region (village Sosnivka), Ukraine

Area / 600 m²

Photography / Andrey Avdeenko

· MENU NOTE ·





The restaurant is a part of the hotel recreation complex relax park VERHOLY. The location of the complex and functional purpose of the restaurant itself became crucial in the choice of concept of a future outlet. The complex is placed at the very heart of a picturesque pine forest in Poltava province. And the restaurant serves as a public catering facility both for guests living in the complex and for visitors who have made up their mind just to have a good time al fresco, breaking away from hustle and bustle of the city.

The restaurant is located on the ground floor of a freestanding building (a conference hall is located on the first floor). Functional zoning of engineering spaces of the restaurant is accomplished with account for all high technology peculiarities of the production processes.



Food & Forest Restaurant Plan



Zoning of guest areas of the restaurant has been elaborated in such a way so as to satisfy needs of all groups of visitors. The restaurant room is designed to seat over 100 people.

Main hall is zoned with a big gas fire 4 meters in length, it includes four basic areas: the first area, an area of low-slung lunge seating, is located along the shop windows with a view of the forest, it is intended for companies comprised of 4 to 6 people each;

The second area, located on both sides of the fire, is intended for the guests who seek romance and warm snug atmosphere;

The third area, an area with big comfortable armchairs, is located near the

pastry shop, it is intended for sweet tooth guests and simply for ones who are fond of watching the work process of confectioneries manufacturing. The pastry shop and the showcase with ready confectioneries are situated behind a glass partition;

The fourth area of high seating is located in two places at once — bar area and area of communal storage shelf with exhibition of the restaurant's products.

A private hall for 12 persons is also provided, with opportunity of personal kitchen service. The major focus in this hall is a big table with one-piece table-board made of oak. The walls are veneered with an African stone brought from Artesia factory.





CONTRIBUTORS



07BEACH

zero7beach.blogspot.hk
P 200

Beige Design Limited

www.beige.com.hk
P 176

estudi{H}ac

www.estudihac.com
P 222

314 Architecture Studio

314.gr
P 284

Buero Wagner

www.buerowagner.eu
P 212

Estudi Josep Cortina

www.josepcortina.com
P 086, P 096, P 102

4N Architects

www.4N.com.hk
P 276

Corvin Cristian

www.corvincristian.com
P 026

G-sign

www.g-sign.ru
P 150, P 246

81Font & kissmiklos

www.81font.com
kissmiklos.com
P 230

DAVIS INK

www.davisinkltd.com
P 170, P 240

Hako Design

www.hakodesign.com
P 070, P 076

AlvinT

www.alvin-t.com
P 206

Design Atelier RONDO

www.rondo-design.jp
P 272

Joseph Grappin Studio

www.josephgrappin.com
P 266

Aria Group Architects, Inc.

www.ariainc.com
P 014

Doyle Collection

www.doylecollection.jp
P 064

Juan Carlos Menacho

juancarlosmenacho.com
P 126

Asano Geijutsu Inc.

www.asanog.jp
P 132

Dittel Architekten

di-a.de
P 008, P 292

LAI STUDIO

www.laistudio.com
P 002

BASILE Studio

www.basilestudio.com
P 186, P 234

Esrawe Studio

www.esrawe.com
P 144

Mathieu Lehanneur

www.mathieulehanneur.fr
P 058



CONTRIBUTORS



Mister Important Design

www.misterimportant.com
P 194

PH.D

ph-d.com
P 052, P 260

Studio Yaron Tal

www.yarontal.com
P 082

Nir portal Architects & Liat Essig

www.nirportal.co.il
P 156

Pitsou Kedem & Baranowitz – Amit Design Studio

www.pitsou.com
www.facebook.com/BaranowitzAmit
P 020

Tzahi Shemesh & Gal Gerber

www.galgerber.com
www.studioshemesh.com
P 038

Onion

www.onion.co.th
P 032

PS Studio

ps-studio.com/work
P 288

Vaillo + Irigaray Estudio

www.vailloirigaray.com
P 044

OOZN

www.oozndesign.com
P 280

Q:NØ Architects

www.qnoarquitectos.com
P 108

Vie Studio

www.viestudio.com.au
P 190

Panorama

www.panoramahk.com
P 092

Savvy Studio

www.savvy-studio.net
P 254

YOD Design Lab

yoddesign.com.ua/en
P 114, P 120

party/space/design

partyspacedesign.com
P 162

Sergey Makhno Architects

www.mahno.com.ua
P 182

Pencil Office

www.penciloffice.com
P 138

Studio Belenko

www.belenko.ua
P 216