

The Art of BAR DESIGN

Foreword by Natali Canas del Pozo

images
Publishing

Contents

Foreword: How To Design a Good Bar	004
--	-----

Cocktail Bars

Absinthe Salon	012
Apt.	018
Benedict Daily Bar	024
Blue Wave Cocktail Bar - One Ocean Club	030
Canvas	038
Cella Bar	044
Dr. Fern's Gin Parlour	050
Foxglove	056
JIS Sapporo	064
O&S club	070
Ricca	076

Restaurant Bars

Abyss Pub	084
Bunker	090
Call Soul	096
Casa Dorita	100
Kaffeine	106
Pink Moon	112
STK Toronto	198
The Birra	122
Vandal	128
White Monkey Pizza Lab & Bar	134

Nightclubs

Light	142
Mesh	148
Omeara	156
Ophelia	162
Supperclub	168
V+ Lounge	174

Breweries and Wine Bars

Beer Belly	184
Buona Bocca	188
Charles Smith Wines Jet City	194
Dongli Brewery	200
Flask and The Press	204
LoggerHead Bar	210
Mad Giant brewery	216
Meantime Brewing Company's Tasting Rooms	222
Midtown Brewery Bar	226
Naman Retreat Beach Bar	232
Shishka Bar	236
The Wine Ayutthaya	242
Zuo'an Beer Art Factory	246

Index	252
-------------	-----



LoggerHead Bar

YOD studio of commercial design

Location • Kyiv, Ukraine

Area • 1292 square feet (120 square meters)

Completion • 2016

Photography • Andrey Avdeenko

A LoggerHead is an iron tool in a form of a full sphere on a long handle. Mixologists used this tool to dissolve sugar in drinks. In the 18th century, when mixology was first conceived, the LoggerHead was the main instrument of bartenders. At that time, the recipes were simple and ingredients were strong yet so few they could be counted on one hand. The legendary LoggerHead, used between 1740 and 1780, is kept in the bar. At the guest's wish, the bartender can use this tool and demonstrate some of the mystery of the time period.

A single nameless door with a cutoff switch that looks like iron doorway of a transformer house marks the entrance to the LoggerHead Bar. The bar is located on a dark patio in the very heart of the city. Adherents of bar culture have been hurrying and scurrying about the city in quest of this secret door for a month. As far as the bar is for friends and friends of friends, there is no easy way to find it. The customers will not find its Facebook page as well as an identification marking. There is a particular audience here, which is unique, closed and original.

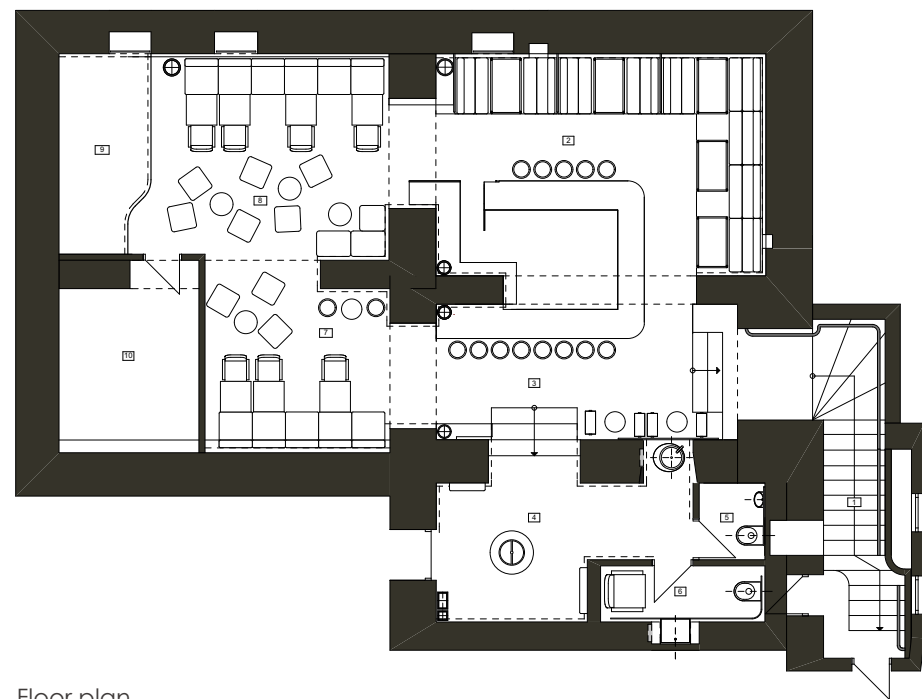
The premise around the bar is saturated with history. The building is used to be the residence of Jacob Berner, a famous Kyiv merchant and philanthropist. The building for Berner was built by Vladimir Nikolaev in 1886. Attentive guests will definitely notice the brick with "JB" initials on the sidewalls.

The bar concept, as well as location, has fully influenced the interior character. To save the historical character, it was decided to leave the space pristine as possible. The decision was made to emphasize the key points of the venue: the authenticity of the building, bartender's art, and jazz music. Thanks to architectural renovation and careful use of modern materials, the historic presence was highlighted.

Arched domes of the premises survived intact. This, in particular, forms LoggerHead's character and connects guests with the history of the place. Besides the sole plate around the perimeter, the amber lighting is hidden. This helped to show the structure of ancient masonry construction. Smooth "honey" light floods the walls, creating intrigues the mood and relax. A pattern of brass and steel was engraved into the floor. The plate around the perimeter dilutes the monotony of hot-rolled metal.

LoggerHead's soul is undoubtedly contracted bar counter in the center of the space. There is a main crowd of guests here. People perceive bar culture, taste new mixes and socialize.

Jazz is always played in the room with a scene. This helps to form a community grouped by music preference. The jazzy atmosphere is also highlighted by original lamps in the form of microphones developed co-authored by designer Andrey Galushka.



Floor plan



- 1/ Bar counter
- 2/ Arched domes
- 3/ Amber ambient lighting



4/ Seating area
5/ Restroom

