

Chris van Uffelen

Contemporary
Café Design ●

A COFFEE A DAY

BRAUN



Architect **YOD GROUP**
Graphic Designer **PRAVDA DESIGN**
Location **KYIV – UKRAINE**

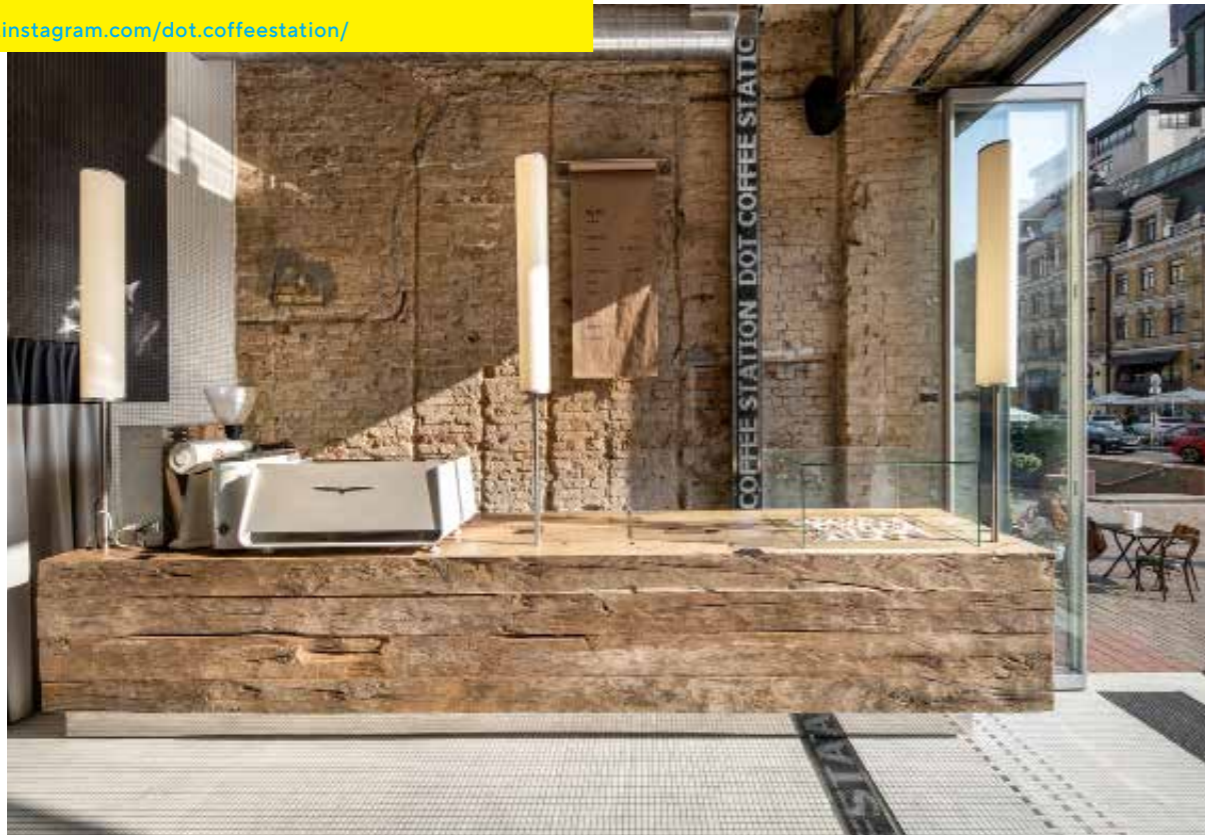
Year of Completion **2021** Gross floor area/seats **30,6M2/10**

Project Caff-217

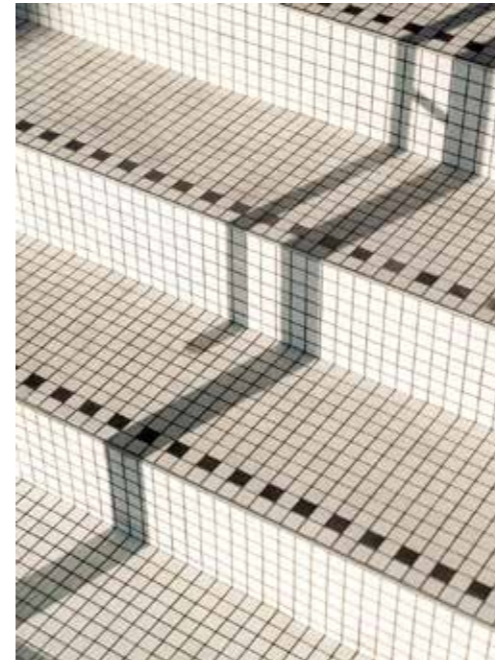
This sticky-note is just for index information and will be removed before print

Architect YOD Group
Homepage www.yoddesign.com.ua
Graphic Designer Pravda Design
Homepage www.pravdadesign.com
Photo: Andrey Bezuglov
Homepage bezuglov.ua

www.instagram.com/dot.coffeestation/



A



B

- A bare brick walls and wooden counter at the entrance
- B black and white mosaic steps
- C glass sliding doors towards the city
- D seating area with mosaic pixel art
- E timber bench and stainless steel
- F floor plan
- G high ceiling and mosaic pixel art

DOT Coffee Station #1 is a city café that specializes in high-quality coffee drinks to go. It is located in central Kyiv on the street that borders Bessarabska Square, a vibrant point in one of the city's most active neighborhoods.

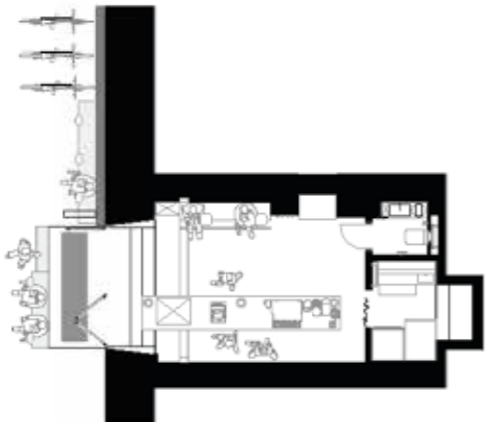
The interior design focuses on mosaic pixel art on the walls that incorporates the dot as a pixel theme. It evokes a weird, sincere and universal emotion manifesting modern city life. The location's dynamic rhythm is also reflected by narrow LED-screens displaying scrolling text. The stairs and part of the wall surface are covered with white mosaic tiles. Other walls show the bare brick that highlights the value of the building erected in 1900.

The architects decided to show the 4.75-meter-high ceiling instead of building a mezzanine with additional seating places. Glass sliding doors create a transparent façade and let the room fill up with light, emphasizing the venue's hospitality. The café has two little tables and a niche with a bench where a few guests can sit. Another seating place is the massive bench along with the building façade next to the café. The timber of both benches and the counter reuses old beams that used to be elements of a barn a long time ago. It is a time-proven material that tells its own story and works as a contrast with the perfect and cold elements made of stainless steel ●





D



E F

G

